



VERNON TOWNSHIP
SCHOOL DISTRICT


19-20 Category 1 Transport

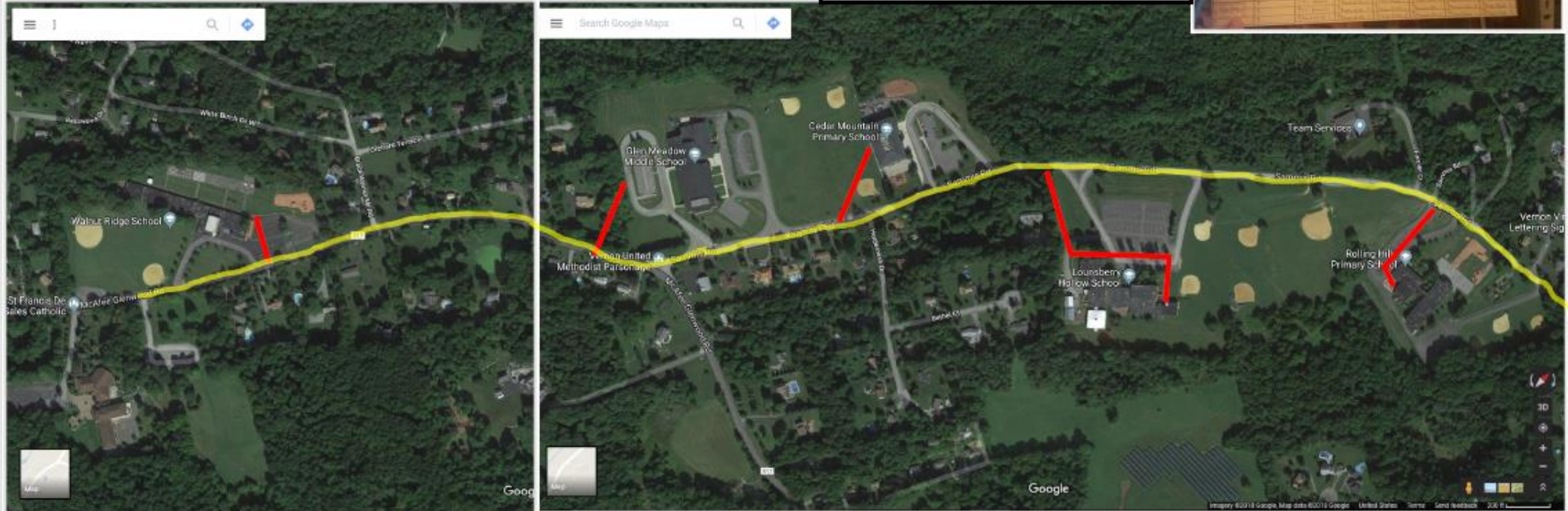
Project Summary

- The Vernon Township School District seeks to transport our intranet across buildings via fiber optic transport on poles in Vernon. Each building currently has private fiber from the building to the nearest pole but we are requesting proposals to transport the data between buildings.
- See the following for a map of locations.

VTSD FIBER OPTIC MAP

LEASED DARK FIBER - 

PURCHASED PRIVATE FIBER - 



Part of the referendum in the 99-00 school year, VTSD purchased this SIECOR transceiver pictured on the right. This transceiver takes the 36 fiber-spool and divides up the fiber optics to transport the fiber out from Glen Meadow to the other schools (including the former CST and BOE buildings).



In the 99-00 School year, VTSD had a referendum to create our infrastructure including the purchase of private fiber to the buildings. At this time, Warwick Valley Telephone was paid \$77,000 to run and splice fiber optic cable from their poles to each building's point of demarcation. Also at that time, it was decided to lease the dark fiber on the poles from WVT. VTSD does not own the fiber on the poles from Walnut Ridge to the High School.

Location Summary

- The Head End of our district is Glen Meadow Middle School (7 Sammis Rd, Vernon NJ 07462). Our ISP comes in at that building and then is routed to our other locations:
- The Walnut Ridge School (625 County Rd 517, Sussex, NJ 07461)
- Cedar Mountain Primary School (17 Sammis Rd, Vernon Township, NJ 07462)
- Lounsberry Hollow School (30 Sammis Rd, Vernon Township, NJ 07462)
- Rolling Hills Primary School (60 Sammis Rd, Vernon Township, NJ 07462)
- Vernon Township High School (1832 County Rd 565, Glenwood, NJ 07418)